



# EFFECTIVE PRETREATMENT FOR GREEN INFRASTRUCTURE

**75-90% SEDIMENT CAPTURE | 60-90% GROSS SOLIDS CAPTURE**

- Easy, quick maintenance
- Prevents inlet erosion
- Reduces practice bypass
- Meets pretreatment requirements
- Sumpless - dries between events
- Retrofit or new installations

## MODELS FOR SITE-SPECIFIC NEEDS



**Turret**  
Most Versatile



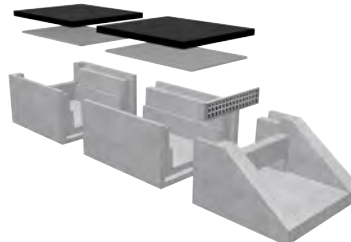
**Fortress**  
Curbside/Tight Spaces  
Small Footprint



**Foxhole**  
Under Walkways  
Modular/Extendable



**Bunker**  
Small Site/Residential  
Lightweight





## SIMPLE FUNCTION | INNOVATIVE SOLUTION



Runoff enters chamber via curb-cut and inlet apron



Provides stable inlet and effective pretreatment



Clean out in minutes with simple hand tools

## MODEL SPECIFICATIONS



### Turret

- Monolithic concrete chamber and base
- 12" ponding depth
- 46" x 50" base, 1,100 lbs total weight



### Fortress

- Concrete with metal inlet and outlet plates
- 9" ponding depth
- 17.75" x 48" base, 650 lbs total weight



### Foxhole

- Concrete sections with fiberglass lids
- 9" ponding depth
- Dimensions and weight site-specific



### Bunker

- Recycled plastic lumber
- 12" or 9" ponding depth
- 20" x 51.25" base, 100 lbs total weight

